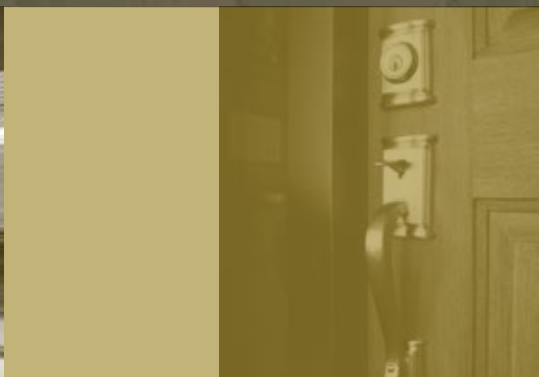




CUSTOM BUNGALOW

375 Silverado Crest Landing
Dressage, Silverado

It's all
in the
details



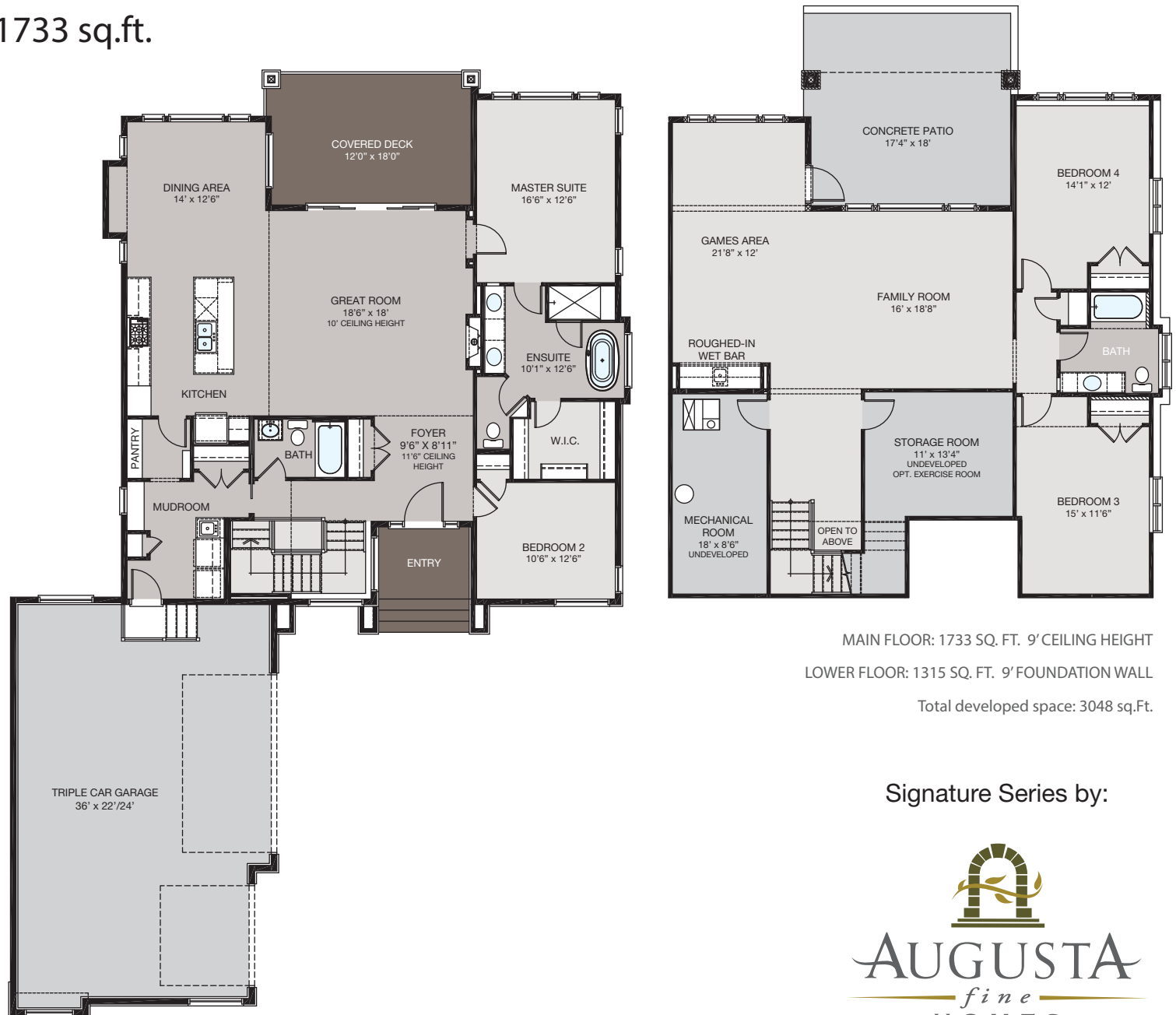
augustafinehomes.com

CUSTOM BUNGALOW

1733 sq.ft.

- Built to Signature series specifications
- Triple car garage
- 9' developed basement & main floor ceiling heights
- Maytag Stainless steel appliances
- Stylish cabinetry with extended uppers
- Exquisite hardwood flooring in the kitchen, dining, foyer, pantry & hall
- Beautiful ceramic tile
- Gorgeous stone counters throughout
- Designer maple/metal railing on staircase
- Large great room with 10' ceiling
- Fiber cement siding / stucco
- Exposed aggregate driveway & steps
- Covered rear deck with patio below

Phone: 587.215.9509
 artesia@augustafinehomes.com



MAIN FLOOR: 1733 SQ. FT. 9' CEILING HEIGHT
 LOWER FLOOR: 1315 SQ. FT. 9' FOUNDATION WALL
 Total developed space: 3048 sq.Ft.

Signature Series by:

