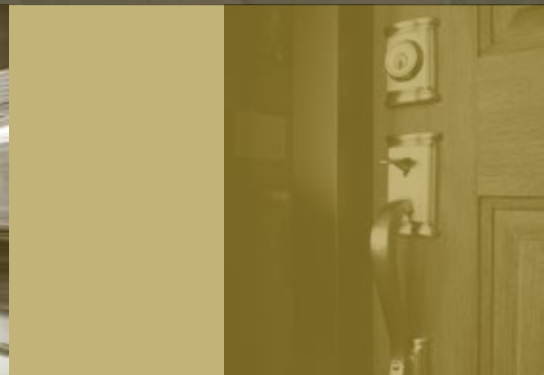




CUSTOM 2 STOREY

343 Silverado Crest Landing
Dressage, Silverado

It's all
in the
details



augustafinehomes.com

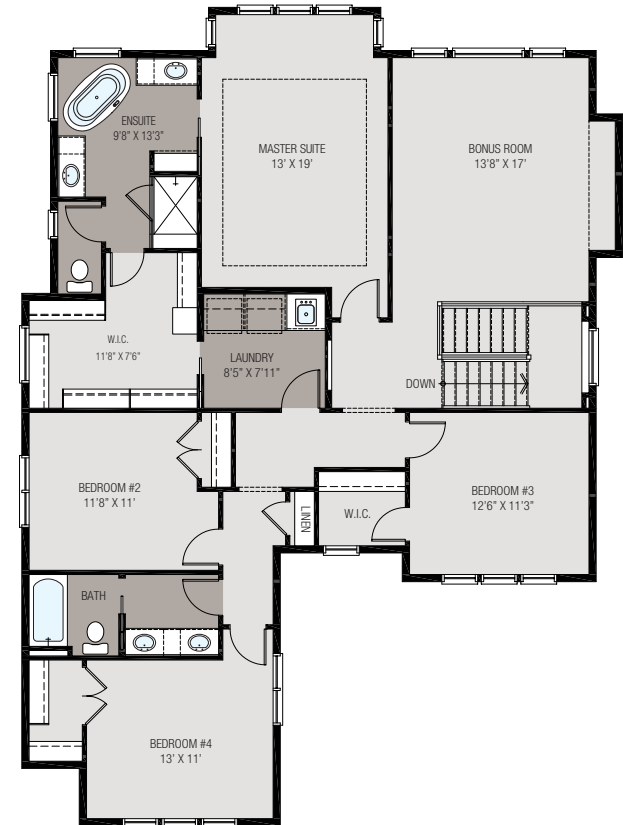
CUSTOM 2 STOREY

3012 sq.ft.

- BUILT TO SIGNATURE SERIES SPECIFICATIONS
- TRIPLE CAR GARAGE
- WALKOUT BASEMENT
- 9' FOUNDATION, MAIN & UPPER FLOOR CEILING HEIGHTS
- MAYTAG STAINLESS STEEL APPLIANCES
- STYLISH KITCHEN CABINETRY
- EXQUISITE HARDWOOD FLOORING IN THE KITCHEN, DINING AND GREAT ROOM
- BEAUTIFUL CERAMIC TILE
- NATURAL GAS FIREPLACE WITH FULL TILE TO CEILING HEIGHT
- GORGEOUS STONE COUNTERS THROUGHOUT
- DESIGNER MAPLE/METAL RAILING ON STAIRCASE
- LARGE GREAT ROOM WITH 9' CEILING
- FIBER CEMENT SIDING / STUCCO
- EXPOSED AGGREGATE DRIVEWAY & STEPS
- 15' X 12' REAR DECK

PHONE: 587.215.9509

PDONOVAN@AUGUSTAFINEHOMES.COM



MAIN FLOOR: 1312 SQ. FT. 9' CEILING HEIGHT

UPPER FLOOR: 1700 SQ. FT. 9' CEILING HEIGHT

TOTAL DEVELOPED SPACE: 3012 SQ.FT.

Signature Series Specifications by:

